



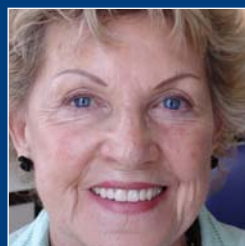
# Schottlander Denture Base Ranges

Part of the Award Winning Enigma & Natura Denture Systems



## enigma

**Colour Tone** Gingival Colouring Acrylic  
**High-Base** High Impact Denture Base



## Pegasus

**Plus** Denture Base, **Plus** Repair Acrylic  
**Pourable** Cold Cure Denture Base



## Introduction

As part of the Schottlander Denture System, Enigma and Pegasus Denture Bases and Repair Acrylic form a range of materials to enhance the work carried out in the laboratory. All shades within the range are colour matched to each other to enable the correct material to be chosen for the application concerned. Their unique polymer systems are produced by state of science equipment to give total control over product specification, quality and consistency. All Schottlander acrylics are cadmium free.

Enigma and Pegasus Denture Bases are further enhanced by the Enigma Colour Tone System for personalisation of gum colouration.

The Schottlander Denture Systems are supported by comprehensive technique manuals, instructional DVD and optional training courses that enable the Dental Technician to produce true to life cosmetic dentures.

# enigma Colour Tone

## Gingival Colouring Acrylic - *the cosmetic advantage*

Showing beautiful teeth to best advantage requires an equally beautiful acrylic base, replicating the appearance of the natural gingival tissue.

Natural gingival tissue is not uniform in colour. The thicker epithelium on bound gingivae or the bone showing through thin mucosa is lighter in colour. Areas of greater vascularity, where the epithelium is thinner as well as papillae are darker. The gingival tissues of many ethnic groups have a bluish or brownish tinge.

To reproduce these and other colourations use Enigma Colour Tones.

A simple technique using a personalised choice from the range of eight colours are applied as layers of acrylic in the denture flask.

- Shade matching to typical gum tones of different ethnic groups or custom matching to the patient's individual gingivae.
- Enigma Colour Tone is available as a kit containing the eight gingival colouring powders, special liquid and full training material - Refill bottles are also available.
- A 24 page technique book is available complete with clinical cases and detailed tips & hints by master technician Mrs Ruth Bourke.
- An instructional DVD "A World of Difference" features the work and teaching of international prosthodontist Dr John Besford and master technician Mrs Ruth Bourke.
- Optional hands-on training courses are available to teach the techniques for matching the patient's own gingival colouring.



### Enigma Colour Tone Shades:

Ivory, Light Pink, Natural Pink, Medium Pink, Dark Pink, Blue Pink, Light Brown and Dark Brown.

**Presentation:** Powder 15g bottles, Liquid 100ml can.

### Ancillary products:

Enigma Colour Tone Brush, Enigma Colour Tone Book, World of Difference Technicians Programme.

## PHYSICAL PROPERTIES

Powder: Liquid ratio 24g:10ml (2.4g per ml).  
Maximum residual monomer content: 2.2%.



# enigma High-Base

## High Impact Denture Base - a true high impact acrylic

High flexural strength with impact strength more than twice that achievable with many standard acrylics.

- Excellent flexural strength alongside impact strength (to reduce risk of breakage in the mouth).
- A true high impact acrylic that is reinforced with styrene-butadiene rubber particles for higher impact resistance. Any risk of breakage is virtually eliminated.
- High bond strength to acrylic teeth when compared to competitor products.
- Enigma High-Base possesses excellent flow and packing characteristics. It remains at a workable consistency throughout its working time, even at varying temperatures, so enabling multiple packing to take place.
- Enigma High-Base possesses exceptional long-term colour stability.
- Exceptional dimensional stability and fit in the mouth.
- Smooth micro particle formulation is resistant to plaque retention.
- Easy to polish to give a lasting sheen.
- Available in the two popular Schottlander cosmetic shades, Pink Veined and Translucent Veined matched to Pegasus Plus Repair Acrylic and Pegasus Pourable Cold Cure Denture Base.
- Enigma High-Base physical properties conform to or exceed the international standards such as EN ISO 20795-1:2008 for Type 1 Class 1 heat cure denture acrylics.

### PHYSICAL PROPERTIES

Flexural Toughness	1.9MPa/m <sup>2</sup>
Fracture of Work	900J/m <sup>2</sup>
Flexural Strength	90MPa
Flexural Modulus	2100MPa
Residual Monomer	1.6%
Water Sorption	20 mg/mm <sup>3</sup>
Water Solubility	1.3 mg/mm <sup>3</sup>
Powder: Liquid ratio	21g:10ml (2.1g per ml)
Processing times from end of mixing at 23°C and employing above powder:liquid ratio	
Dough time at 23°C	10 to 20 minutes
Working time at 23 ± 2°C	10 ± 2 minutes



Enigma Teeth and full Enigma Colour Tone colouring on Enigma High-Base Pink Veined.



Natura Teeth on Pegasus Plus Translucent Veined. No Enigma Colour Tone.



Enigma Teeth on Pegasus Plus Pourable Cold Cure Pink. No Enigma Colour Tone.

**Enigma High-Base Shades:**  
Pink Veined and  
Translucent Veined.

**Presentation:**  
Powder 500g bottle and  
3kg bottle.

Liquid 250ml can,  
1 litre can, 2.5 litre can,  
5 litres (2 x 2.5 litres).

Standard pack 500g powder,  
250ml liquid and measuring set.



# Pegasus Plus

## Denture Base

The dependable rapid heat cure acrylic. Simple technique with a choice of popular colours.

- Reaches a packable dough consistency in 5-6 minutes and remains workable for up to 20 minutes for multiple packing.
- Can be cured using all standard curing cycles.
- Superfine polymer delivers excellent dimensional stability and an exceptional fit.
- Faster and easier polishing gives an exceptionally dense high surface sheen and smoothness.
- The smooth dough produces extremely thin flashes.
- Long term colour stability.
- Available in Clear and the three popular Schottlander cosmetic shades, Pink Veined, Translucent Veined and Pink matched by Pegasus Plus Repair Acrylic for a seamless repair, and to the other Schottlander denture bases for combination cases.
- Pegasus Plus Denture Base physical properties conform to or exceed the international standard EN ISO 20795-1:2008 for Type 1 Class 1 heat cure denture acrylics.

# PEGASUS

## Plus Denture Base



**Pegasus Denture Base Shades:**  
Pink Veined, Translucent Veined,  
Pink and Clear.

**Presentation:**

Powder - 500g bottle, 3kg bottle,  
12kg tub.

Liquid - 1 litre can, 2.5 litre can,  
5 litre ( 2 x 2.5 litres).

Economy Pack 12g powder and  
5 litre liquid.

### PHYSICAL PROPERTIES

Flexural Strength	100MPa
Flexural Modulus	2100MPa
Residual Monomer	0.5%
Water Sorption	22 mg/mm <sup>3</sup>
Water Solubility	1.2 mg/mm <sup>3</sup>
Powder: Liquid ratio	2.34g per ml
Processing times from end of mixing at 23°C and employing above powder:liquid ratio	
Dough/Initial packing time at 23°C	6 ± 2 minutes
Working/final packing time at 23 ± 2°C	20 minutes

# Pegasus Plus

## Repair Acrylic

For reliable repairs with simple techniques and perfectly matched to Schottlander's popular cosmetic denture base shades.

- An exact shade match with Enigma High-Base, Pegasus Plus and Pegasus Pourable Cold Cure.
- Available in Clear and the three Schottlander cosmetic shades Pink Veined, Translucent Veined and Pink.
- Pegasus Plus Repair is quick and easy to use with excellent flow characteristics and easy incorporation of powder into the liquid to minimise air entrapment.
- Superfine particle size enables polishing and finishing to be carried out easily to a high gloss finish.
- Durable with cross linked polymer to enhance the strength of the repair.
- Outstanding bond strength to the existing acrylic even when the denture is old.
- May also be used for additions and relines.

### PHYSICAL PROPERTIES

Flexural Strength	90MPa
Flexural Modulus	2000MPa
Residual Monomer	1.8%
Water Sorption	20 mg/mm <sup>3</sup>
Water Solubility	1.3 mg/mm <sup>3</sup>
Powder: Liquid ratio	1.3g per ml
Processing times from end of mixing at 23°C and employing above powder:liquid ratio	
Stirring time (Method B)	20 to 30 seconds
Working time	2 minutes
Curing time (at 40°C and 3.4 bar)	approx 10 minutes
Curing time (at 23°C in air)	approx 15 minutes

### Schottlander Universal Denture Base Shade Guide.

All shades within the range are colour matched to each other to enable the correct material to be chosen for the application concerned.



PEGASUS  
Plus Repair Acrylic



### Pegasus Plus Repair

#### Acrylic Shades:

Pink Veined, Translucent Veined, Pink and Clear.

#### Presentation:

Powder - 500g bottle, 3kg bottle.

Liquid - 200ml can, 1 Litre can, 2.5 Litre can.

*schottlander*



# Pegasus Pourable

## Cold Cure Denture Base

Amine-free self-curing acrylic for the production of precision cast dentures, relines and repairs. Long term colour stability for all repair, pour and injection techniques. The unique polymer science used in Pegasus Pourable Cold Cure Denture Base brings state-of-the-art performance to pourable acrylics.

- Complete colour stability through the advanced accelerator system.
- Easy to mix with a perfect consistency. Mixing time only 30 seconds. Separation eliminated because of the unique polymer molecular structure.
- With a working time of 10 minutes the dental technician has plenty of time to undertake several jobs in the one batch.
- Superior pour characteristics prevent air entrapment. Complete filling, even of hydrocolloid moulds, eliminates surface imperfections.
- Full 3 minutes pouring phase enables complete flexibility of production.
- Viscous mouldable phase between 4 and 8 minutes permits repairs and relines using overcasts or jigs to be carried out with ease. Short cure time of 10 minutes enhances productivity.
- Superfine polymer facilitates fast trimming and polishes to a dense, high gloss, finish.
- Outstanding fit and an excellent bond to denture teeth.
- Available in the three popular Schottlander cosmetic shades Pink Veined, Translucent Veined and Pink.
- Pegasus Pourable Cold Cure Denture Base physical properties conform to or exceed the international standard EN ISO 20795-1:2008 for Type 2 Class 2 denture base acrylics.

### PHYSICAL PROPERTIES

Flexural Strength	75MPa
Flexural Modulus	1900MPa
Residual Monomer	2.0%
Water Sorption	18 mg/mm <sup>3</sup>
Water Solubility	1.2 mg/mm <sup>3</sup>
Powder: Liquid ratio	1.43g per ml
Processing times from end of mixing at 23°C and employing above powder:liquid ratio	
Mixing time	approx 0.5 minutes
Pouring phase	up to 3 minutes
Stable phase	after 4 minutes
Viscous mouldable phase	up to 8 minutes
Curing time (at 40°C and 2-3 bar)	approx 10 minutes

**PEGASUS**  
Pourable Cold Cure

#### Pegasus Pourable Cold Cure Denture Base Shades:

Pink Veined, Translucent Veined and Pink.

#### Presentation:

Powder - 1kg bottle.

Liquid - 500ml bottle.



# Schottlander

## Ancillary Products

### Schottlander Isolating Solution

A time saving solution in a busy laboratory. Never before have dentures come out so cleanly from the flask. Only one coat needed. Schottlander Isolating Solution is absorbed into the surface of the plaster to give an impermeable seal. Suitable for use with both hot and cold flasks. Especially recommended for the preservation of surface contour and stippling.

**Colour:** Blue. **Presentation:** 1 & 5 litre bottles.

### Schottlander CMS (Cold Mould Seal)

A traditional film-forming plaster sealing solution that forms a strong film over the surface of the plaster. Especially recommended for use with plasters with uneven grain size.

**Colour:** Pink. **Presentation:** 1 & 5 litre bottles.

### Doric Pink Toughened Wax

High quality stable Type 1 pink wax supplied in sheets 19cm x 9cm. Excellent handling characteristics. Conforms to or exceeds EN ISO 2163:2000

**Presentation:** 500g Pack & 2.5g Economy Pack.

### Magilight Light Curing Special Trays

Advanced formulation light curing special trays based on composite technology. Cure thoroughly to give strong and rigid blanks with reduced surface film. Available pre-formed to generous sized upper blank shape. For an ultra smooth and hardened surface Magilight Dry Coat sealant is available.

#### Specification

Tray thickness	≥ 2.2 mm
Transverse strength	≥ 70MPa
Modulus of elasticity	≥ 5000MPa
Depth of cure	≥ 3 mm

**Colour:** Pink & Blue.

**Presentation:** Pack containing 50 Upper Tray Blanks.

### Magilight Tray Dry Coat

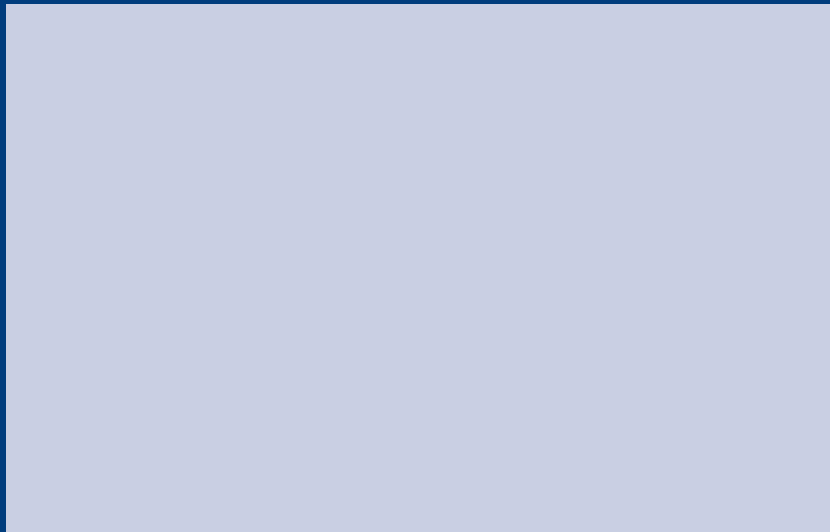
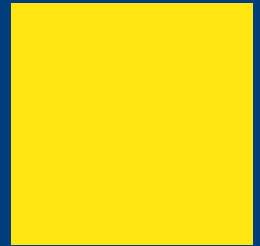
Light curing varnish. Imparts ultra smooth and hardened surface to Magilight Special Trays.

**Presentation:** Bottle 30ml.



Available presentations may vary depending upon country.

*schottlander*



W3625/0410

Tel +44 (0)1462 480848 Fax +44 (0)1462 482802  
Freephone 0800 97 000 79 Freefax 0800 97 000 78  
e-mail: [sales@schottlander.co.uk](mailto:sales@schottlander.co.uk) [export@schottlander.co.uk](mailto:export@schottlander.co.uk)  
[www.schottlander.com](http://www.schottlander.com)

**Davis Schottlander & Davis Ltd**  
Fifth Avenue,  
Letchworth Garden City  
Herts, SG6 2WD England