

Create your world with *initial*
The all-round ceramic system
for every indication

Full Ceramics

GC Initial AL • GC Initial Zr

The GC Initial system consists of one line of six specialised ceramics with which you can create metal-ceramic and full-ceramic restorations for every indication using any fabrication process and framework. For more information on the complete GC Initial system please request our brochure.

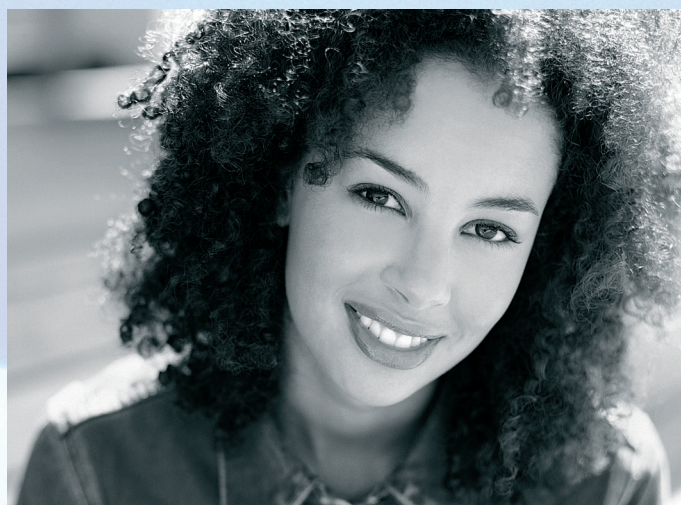
Full ceramic restorations are becoming more and more common in restorative dentistry. With GC Initial AL and GC Initial Zr, the GC Initial system allows you to fabricate every type of conventional full ceramic and hybrid restoration reliably and true-to-colour using aluminium oxide or zirconium oxide frameworks.

GC Initial AL is specifically adapted for strong bonding to material aluminium oxide frameworks with good adhesion, and excellent retention and colour properties.

- Exactly cross-matched coefficients of thermal expansion
- Very good wettability and optimal thermal stability
- Firing temperature of 910°C
- Excellent adhesion and high biocompatibility
- Exact shade-matching with framework materials offering natural aesthetics

GC Initial Zr is specifically adapted for use with high strength zirconium frameworks, making them ideal for the fabrication of delicate substructures such as bridges.

- Exactly cross-matched coefficients of thermal expansion
- Superior aesthetics on high tensile strength zirconium frameworks
- Very good wettability
- Firing temperature of 810°C and short cooling times
- Excellent adhesion and high biocompatibility
- Conventional fixation in the patient's mouth
- Natural-looking aesthetics



Technical Specifications:

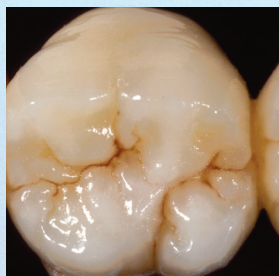
Property	GC Initial AL	GC Initial Zr
Dentin firing (°C)	910	810
CTE (25-500°C; 10 ⁻⁶ ×K ⁻¹)	2nd/4th firing 6.9/6.9	2nd/4th firing 9.4/9.4
Glass transition temperature (°C)	600	550
Solubility (µg/cm ²)	11	12
Density (µg/cm ³)	2.41	2.43
Flexural strength (Mpa)	90	90
Mean particle size (µm; D 50%)	24.2	21.5

GC Initial AL and GC Initial Zr follow EN ISO 9693:2000

(The stated technical/physical values refer to the results of internal tests.)

www.gcinitial.gceurope.com

GC
FIRST IS QUALITY



A MODULAR SYSTEM

GC Initial is available as modular ceramic sets. Each set contains different components, by adding them together, you can create increasingly aesthetic restorations.

MODULE 1 Basic Set

Contains all the fundamental opaque ceramics, shade ceramics and liquids. Designed for basic, standard build-up and to meet the 'standard' requirements of the Vitapan® Classical shade guide.



GC Initial AL Basic Set



GC Initial Zr Basic Set

MODULE 2 Advanced Set

Completes the GC Initial system by adding the remaining shades and accessories to the Basic Set so enabling restorations with the most advanced aesthetics.



GC Initial AL Advanced Set



GC Initial Zr Advanced Set

AVAILABLE SEPARATELY

Entrance Kit

Consists of small quantities of the key ceramics, shade ceramics and liquids to test on a limited number of restorations.



GC Initial AL Entrance Kit

(1 colour set A3)

GC Initial Zr Entrance Kit

(1 colour set A3)



**GC Initial INvivo/INsitu
for AL, Zr, Ti**

Effect materials for internal-external use

GC EUROPE N.V.
Head Office
Interleuvenlaan 13
B - 3001 Leuven
Tel: +32.16.39.80.50
Fax: +32.16.40.02.14
E-mail: info@gceurope.com
www.gceurope.com

GC UNITED KINGDOM Ltd.
22-23, Coopers Court
Newport Pagnell
UK-Bucks. MK16 8JS
Tel: +44.1908.218.999
Fax: +44.1908.218.900
E-mail: info@uk.gceurope.com
www.uk.gceurope.com

*Vita is a registered trademark
of Vita Zahnfabrik, Bad Säckingen.

GC
FIRST IS QUALITY